



Sun Stream Saunas Pricing

2024

Table of Contents

	Page
Why Sunstream Saunas	3
Evolve Mini	4
Evolve 10	7
Evolve 20	10
Evolve 30	13
Supreme 2	16
Supreme 4	19
Industry Leading Features	22
Full Spectrum Light Therapy	25
Electrical Certification	28



4 reasons that make us the 1st choice for infrared saunas!

1 Safety: Relax and enjoy your Sun Stream Sauna knowing that our all new EHS heater technology reduces EMF & ELF to an all-new industry low, safer than all other brands in the market!



[READ MORE](#)

2 Performance: Superior heater placement and 360-degree radiant heat in the Evolve 360 range, provides a greater immersion in radiant heat – the most complete infrared body coverage of all sauna brands.



[READ MORE](#)

3 Residential Lifetime Warranty: The Sun Stream Sauna range comes with a residential Lifetime Warranty on the entire sauna. Yes everything! The heaters, the electronic control system, the cabinet, light bulbs, or anything else you can find. Commercial Warranty is 5-years.



[READ MORE](#)

4 Free delivery to major metro locations: Including Brisbane, Sydney, Canberra, Melbourne, Adelaide & Perth. Part charges apply to regional destinations.



[READ MORE](#)

Sun Stream Evolve Mini

1 person sauna

Small on
footprint,
huge on
performance!

Only
\$4,095
inc. gst

The Evolve Mini is small on footprint but huge on performance. The worlds most powerful sauna of its size! The perfect sauna if you are tight on space in your house or apartment, yet comfortable for a one person sauna experience.

Additionally it features our Nano-Carbon/ultra-low EMF & ELF heaters positioned low on the walls to provide a greater concentration of focused Infrared heat on your body.

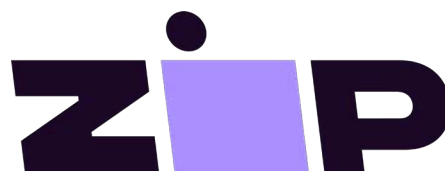
Sweat now, pay later

Sun Stream Saunas has partnered with Zip so you can get the sauna you need on a NO INTEREST payment plan today!

Only \$39.38 per week (plus one-off \$99.00 establishment fee) with 24-months interest free financing option.

Get a decision today, it won't impact your credit score. For full details click on the link below.

[CLICK HERE](#)



Sun Stream Evolve Mini

Key features



Chromotherapy

Our high power Chromotherapy features 180 LEDs, 40 watts of power and 12 colours to choose from with remote control.



Adjustable Infrared Intensity

This unique feature allows the user to adjust the Infrared Heat Intensity for different purposes and personal needs.



Ultra-Low EMF & ELF

EHS Heater technology reduces EMF and ELF to an all-new Industry low.



Complete Coverage

Complete 360-degree infrared sauna body coverage for a faster heavier sweat.



Canadian Hemlock Timber

Constructed from 100% Hypo-allergenic Canadian Hemlock Timber (FSC Certified).



“

Intense is the word! Wow! I love it! Never new heat like this before in a sauna. I find the initial heat coming at me from every direction very soothing and relaxing, much like a warm blanket. After about 8 treatments, I'm really delighted with the results. For one, my normally dry skin, is soft and smooth.

Catherine C.

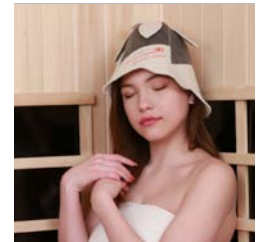
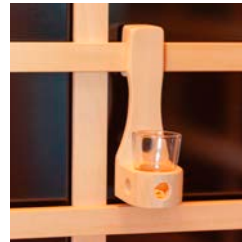
”

Sun Stream Evolve Mini Specifications

1-person 360-degree Far Infrared Sauna	100% Canadian Hemlock / NO Plywood
Industry first 360-degree Radiant Heat	Ultra Low EMF 'Nano Carbon Heaters'
Near Zero EF/ELF Electric Fields	'Titebond' Made in USA Food Safe Glue
Water Base Exterior Lacquer	LCD Internal Control Panel
All Adjustable Infrared Intensity	Supportive Backrest x 1
Bluetooth Receiver & Audio Cord Connection	Quality Sound Speakers

Included Extras:

- Cup holder • Dry skin lymphatic brush • Sun Stream towel • Aromatherapy cup holder • Sauna hat



Optional Extras:

- Australian made sauna cover \$595* • Chromotherapy \$295



Only
\$595
inc. gst



Only
\$295
inc. gst

Measurements:

External: 825 W x 890 D x 1690 H **Internal:** 740 W x 815 D x 1590 H

Electrical Specifications:

The Evolve Mini plugs into any standard 220-240 Volt wall outlet

1390 Watts, 230 Volt, 6.04 Amps

Electrically certified to AS/NZS 60335.1:2011

*Sauna cover shown on the Evolve 30 sauna. Cover size will vary according to sauna model purchased for. Conditions apply for outdoor placement.

Sun Stream Evolve 10 1 person sauna

Elevate your health to the next level!

Only
\$5,795
inc. gst

The Evolve 10 Sun Stream home infrared sauna features our Industry first complete 360-degree infrared body coverage. *Innovation is here.* The Evolve 10 provides a superior immersion in Infrared radiant heat with one of our large Nano-Carbon heater panels centred directly in front of you on our glass door.

This is a true innovation for Infrared saunas, surrounding you 360-degrees with our ultra-low EMF & ELF heaters, projecting more radiant heat on your body for a faster and heavier sweat!

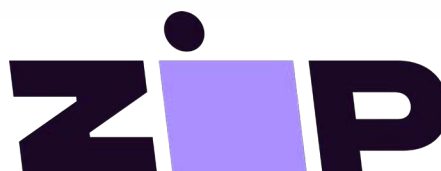
Sweat now, pay later

Sun Stream Saunas has partnered with Zip so you can get the sauna you need on a NO INTEREST payment plan today!

Only \$58.55 per week with 24-months interest free financing option.

Get a decision today, it won't impact your credit score. For full details click on the link below.

[CLICK HERE](#)



Sun Stream Evolve 10

Key features



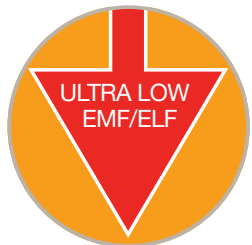
Chromotherapy

Our high power Chromotherapy features 180 LEDs, 40 watts of power and 12 colours to choose from with remote control.



Control Panel

LCD control panel featuring Adjustable Infrared Intensity for different purposes and personal needs.



Ultra-Low EMF & ELF

EHS Heater technology reduces EMF and ELF to an all-new Industry low.



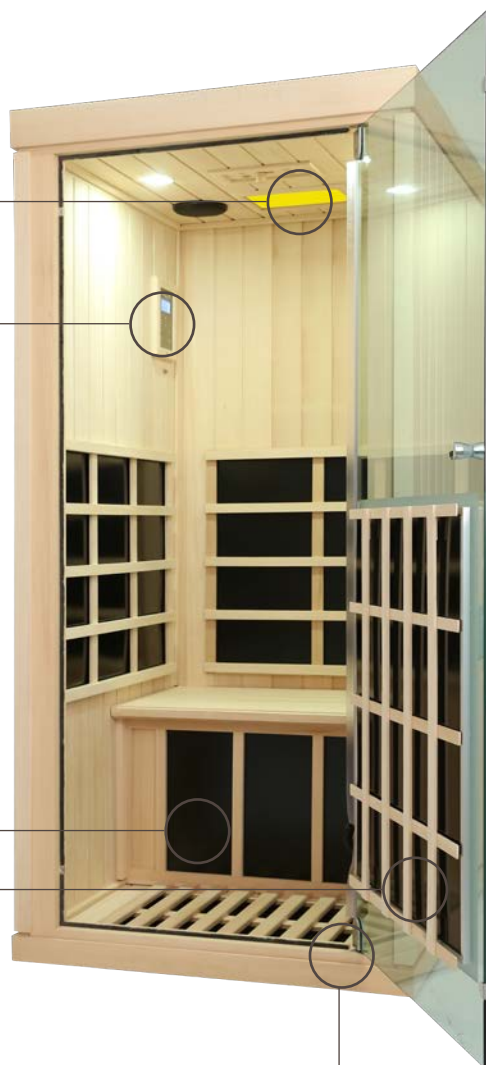
Complete Coverage

Complete 360-degree infrared Sauna body coverage for a faster heavier sweat.



Canadian Hemlock Timber

Constructed from 100% Hypo-allergenic Canadian Hemlock Timber (FSC Certified).



“

I've owned and tested many different brands of infrared saunas. I've found the Evolve 10 to deliver the fastest pre-heat time and superior infrared body coverage compared to others on the market. It's also one of the lowest EMF saunas I've tested. Truly exceeded my expectations! Matt J.

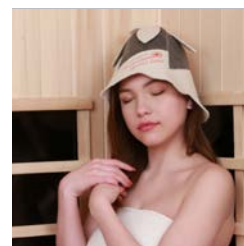
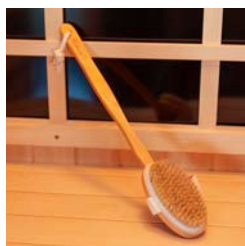
”

Sun Stream Evolve 10 Specifications

1-person 360-degree Far Infrared Sauna	100% Canadian Hemlock / NO Plywood
Industry First 360 Degree Radiant Heat	Ultra Low EMF 'Nano Carbon Heaters'
Near Zero EF/ELF Electric Fields	'Titebond' Made in USA Food Safe Glue
Water Base Exterior Lacquer	LCD Internal Control Panel
All Adjustable Infrared Intensity	High Power LED Chromotherapy
Bluetooth Receiver & Audio Cord Connection	Kenwood Speakers
Supportive Backrest x 1	

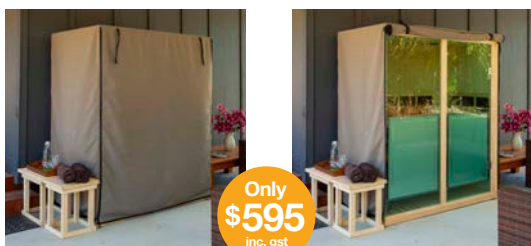
Included Extras:

- Cup holder
- Dry skin lymphatic brush
- Sun Stream towel
- Aromatherapy cup holder
- Sauna hat



Optional Extras:

- Australian made sauna cover \$595*



Measurements:

External: 876 W x 965 D x 1880 H **Internal:** 816 W x 865 D x 1755 H

Electrical Specifications:

The Evolve 10 plugs into any standard 220-240 Volt wall outlet

7.35 Amp, 240 Volt, 1710 Watts

Electrically certified to AS/NZS 60335.1:2011

*Sauna cover shown on the Evolve 30 sauna. Cover size will vary according to sauna model purchased for. Conditions apply for outdoor placement.

Sun Stream Evolve 20 2 person sauna

Your pathway to better health!

Only
\$6,595
inc. gst

The Evolve 20 boasts 25% more power (Watts) than most 2-person saunas and features our industry first complete 360-degree infrared body coverage.

Innovation is here. The Evolve 20 provides a superior immersion in infrared radiant heat with one of our large

Nano-Carbon heater panels centred directly in front of you on our glass door.

This is a true innovation for Infrared saunas, surrounding you 360-degrees with our ultra-low EMF & ELF heaters, projecting more radiant heat on your body for a faster & heavier sweat!

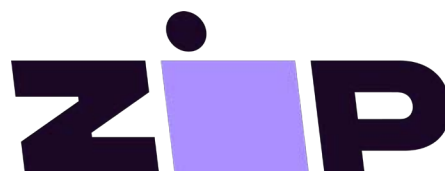
Sweat now, pay later

Sun Stream Saunas has partnered with Zip so you can get the Sauna you need on a NO INTEREST payment plan today!

Only \$66.25 per week with 24-months interest free financing option.

Get a decision today, it won't impact your credit score. For full details click on the link below.

[CLICK HERE](#)



Sun Stream Evolve 20

Key features



Chromotherapy

Our high power Chromotherapy features 180 LEDs, 40 watts of power and 12 colours to choose from with remote control.



Control Panel

LCD control panel featuring Adjustable Infrared Intensity for different purposes and personal needs.



Ultra-Low EMF & ELF

EHS Heater technology reduces EMF and ELF to an all-new industry low.



Complete Coverage

Complete 360-degree infrared sauna body coverage for a faster heavier sweat.



Canadian Hemlock Timber

Constructed from 100% Hypo-allergenic Canadian Hemlock Timber (FSC Certified).

“

I chose Sun Stream for their ultra low EMF's & toxic free materials, I also sweat faster in my Sun Stream than I have in other infrared saunas I have used in the past. Daniel Kirk

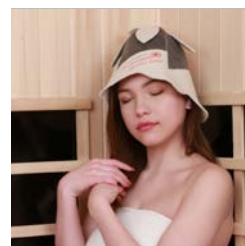
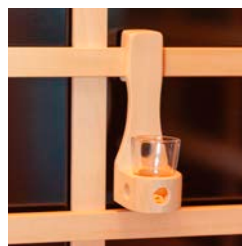
”

Sun Stream Evolve 20 Specifications

2-person 360-degree Far Infrared Sauna	100% Canadian Hemlock / NO Plywood
Industry First 360 Degree Radiant Heat	Ultra Low EMF 'Nano Carbon Heaters'
Near Zero EF/ELF Electric Fields	'Titebond' Made in USA Food Safe Glue
Water Base Exterior Lacquer	LCD Internal Control Panel
All Adjustable Infrared Intensity	High Power LED Chromotherapy
Bluetooth Receiver & Audio Cord Connection	Kenwood Speakers
Supportive Backrests x 2	L Movable Bench x 1

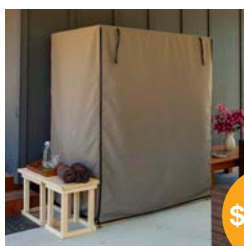
Included Extras:

- Cup holder
- Dry Skin lymphatic brush
- Sun Stream towel
- Aromatherapy cup holder
- Sauna hat



Optional Extras:

- Australian made sauna cover \$595*



Only
\$595
inc. gst

Measurements:

External: 1180 W x 965 D x 1880 H **Internal:** 1120 W x 865 D x 1755 H

Electrical Specifications:

The Evolve 20 plugs into any standard 220-240 Volt wall outlet (10 Amp). NB: may need to be dedicated if other heavy appliances are on the same circuit.

9.04 Amp, 240 Volt, 2060 Watts

Electrically certified to AS/NZS 60335.1:2011

*Sauna cover shown on the Evolve 30 sauna. Cover size will vary according to sauna model purchased for. Conditions apply for outdoor placement.

Sun Stream Evolve Corner

2 person sauna

Only
\$7,595
inc. gst

The Evolve Corner provides a spacious, comfortable sauna experience for two people with a variety of possible sitting positions.

The Evolve Corner features 360-degree surround

heating and delivers more Infrared radiant heat to your body, than other 2-person corner models on the market with its large 360 watt front door-mounted heater, delivering 2100 watts of heating power.

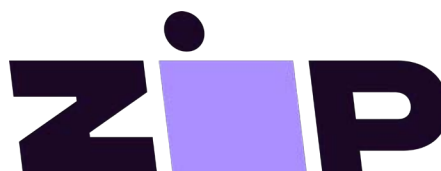
Sweat now, pay later

Sun Stream Saunas has partnered with Zip so you can get the Sauna you need on a NO INTEREST payment plan today!

Only \$75.88 per week with 24-months interest free financing option.

Get a decision today, it won't impact your credit score. For full details click on the link below.

[CLICK HERE](#)



Sun Stream Corner

Key features



Chromotherapy

Our high power Chromotherapy features 180 LEDs, 40 watts of power and 12 colours to choose from with remote control.



Control Panel

An internal LCD control panel featuring Adjustable Infrared Intensity for different purposes and personal needs.



Ultra-Low EMF & ELF

EHS Heater technology reduces EMF and ELF to an all-new industry low.



Complete Coverage

Complete 360-degree infrared sauna body coverage for a faster heavier sweat.



Canadian Hemlock Timber

Constructed from 100% Hypo-allergenic Canadian Hemlock Timber (FSC Certified).

“

We love love love our Sunstream Saunas and have them in our health clinics. Our patients have all commented that they're the best ones they've used and are repeat customers. Sharni Sinclair

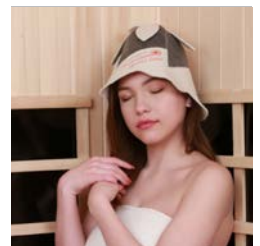
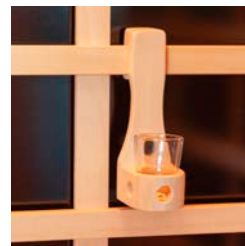
”

Sun Stream Evolve Corner Specifications

2-person 360-degree Far Infrared Sauna	100% Canadian Hemlock / NO Plywood
Industry First 360 Degree Radiant Heat	Ultra Low EMF 'Nano Carbon Heaters'
Near Zero EF/ELF Electric Fields	'Titebond' Made in USA Food Safe Glue
Water Base Exterior Lacquer	LCD Internal Control Panel
All Adjustable Infrared Intensity	High Power LED Chromotherapy
Bluetooth Receiver & Audio Cord Connection	Kenwood Speakers
Supportive Backrests x 2	L Movable Bench x 1

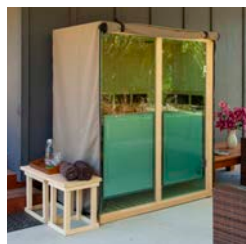
Included Extras:

- Cup holder
- Dry Skin lymphatic brush
- Sun Stream towel
- Aromatherapy cup holder
- Sauna hat



Optional Extras:

- Australian made sauna cover (price to be advised on enquiry)*



Measurements:

External: 1224 W x 1224 W x 652 D x 1880 H **Internal:** 1164 W x 1164 W x 592 D x 1755 H

Electrical Specifications:

The Evolve Corner plugs into any standard 220-240 Volt wall outlet (10 Amp). NB: may need to be dedicated if other heavy appliances are on the same circuit.

9.4 Amp, 240 Volt, 2090 Watts

Electrically certified to AS/NZS 60335.1:2011

*Sauna cover shown on the Evolve 30 sauna. Cover size will vary according to sauna model purchased for. Conditions apply for outdoor placement.

Sun Stream Evolve 30 3 person sauna

The natural choice

Only
\$7,595
inc. gst

The Evolve 30 Sun Stream home infrared sauna features our *industry first* complete 360-degree infrared body coverage.

Innovation is here. The Evolve 30 provides a superior immersion in Infrared radiant heat with two of our large

Nano-Carbon heater panels placed directly in front of you on our glass door & glass front panel.

This is a true innovation for Infrared saunas, surrounding you 360-degrees with our ultra-low EMF & ELF heaters, projecting more radiant heat on your body for a faster and heavier sweat!

Sweat now, pay later

Sun Stream Saunas has partnered with Zip so you can get the sauna you need on a NO INTEREST payment plan today!

Only \$75.88 per week with 24-months interest free financing option.

Get a decision today, it won't impact your credit score. For full details click on the link below.

[CLICK HERE](#)



Sun Stream Evolve 30

Key features



Chromotherapy

Our high power Chromotherapy features 180 LEDs, 40 watts of power and 12 colours to choose from with remote control.



Control Panel

LCD control panel featuring Adjustable Infrared Intensity for different purposes and personal needs.



Ultra-Low EMF & ELF

EHS heater technology reduces EMF and ELF to an all-new industry low.



Complete Coverage

Complete 360-degree infrared Sauna body coverage for a faster heavier sweat.



Canadian Hemlock Timber

Constructed from 100% Hypo-allergenic Canadian Hemlock Timber (FSC Certified).

“

I received it Friday the 17th of August and had it ready to go that evening! I have to say, WOW, it is amazing! The quality is 2nd to none and was super easy to assemble. I think I mentioned I had a Dynamic for a few years and this is light years ahead!! I love it! And the panels all around are superb! Paul P.

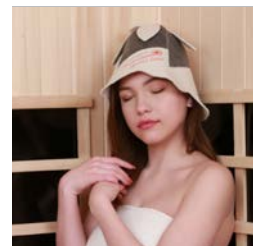
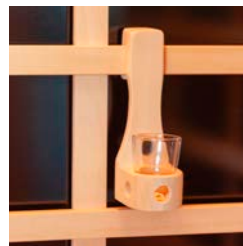
”

Sun Stream Evolve 30 Specifications

3-person 360-degree Far Infrared Sauna	100% Canadian Hemlock / NO Plywood
Industry First 360 Degree Radiant Heat	Ultra Low EMF 'Nano Carbon Heaters'
Near Zero EF/ELF Electric Fields	'Titebond' Made in USA Food Safe Glue
Water Base Exterior Lacquer	LCD Internal Control Panel
All Adjustable Infrared Intensity	High Power LED Chromotherapy
Bluetooth Receiver & Audio Cord Connection	Kenwood Speakers
Supportive Backrests x 3	L Movable Bench x 2

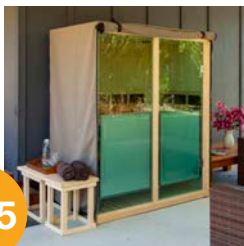
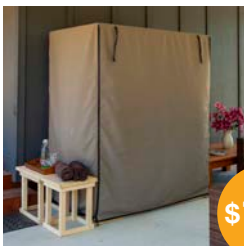
Included Extras:

- Cup holder
- Dry skin lymphatic brush
- Sun Stream towel
- Aromatherapy cup holder
- Sauna hat



Optional Extras:

- Australian made sauna cover \$715*



Only
\$715
inc. gst

Measurements:

External: 1535 W x 965 D x 1880 H **Internal:** 1467 W x 865 D x 1755 H

Electrical Specifications:

The Evolve 30 plugs into any standard 220-240 Volt wall outlet (10 Amp). NB: May need to be dedicated if other heavy appliances are on the same circuit.

2255 Watts, 240 Volt, 9.4 Amps

Electrically certified to AS/NZS 60335.1:2011

*Conditions apply for outdoor placement.

Sun Stream Supreme 2 2 person sauna

A place
where you
can relax
and get
better

Only
\$5,995
inc. gst

Our Supreme 2 home infrared sauna provides adequate room for two people or comfortable, spacious room for one.

This 2-person infrared sauna features our Nano-Carbon ultra-low EMF & ELF heaters positioned low on the

walls to provide a greater concentration of focused Infrared heat on your body.

This is far superior to the tall narrow heaters used in most brands & ensures a quick heavy sweat!

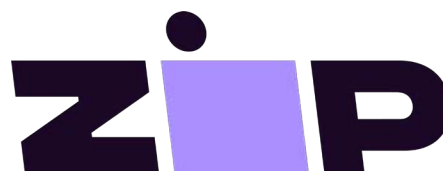
Sweat now, pay later

Sun Stream Saunas has partnered with Zip so you can get the Sauna you need on a NO INTEREST payment plan today!

Only \$60.48 per week with 24-months interest free financing option.

Get a decision today, it won't impact your credit score. For full details click on the link below.

[CLICK HERE](#)



Sun Stream Supreme 2

Key features



Chromotherapy

Our high power Chromotherapy features 180 LEDs, 40 watts of power and 12 colours to choose from with remote control.



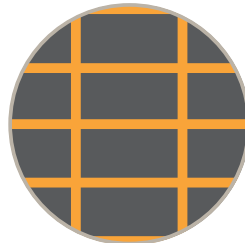
Control Panel

Internal and external LCD control panels featuring adjustable infrared intensity for different purposes and personal needs.



Ultra-Low EMF & ELF

EHS heater technology reduces EMF and ELF to an all-new industry low.



Superior Heater Placement

Smaller concentrated heaters and large side wall heaters result in a greater immersion in radiant heat.



Canadian Hemlock Timber

Constructed from 100% Hypo-allergenic Canadian Hemlock Timber (FSC Certified).



“

We are so very pleased with your product. I am most grateful for all you have done my wife and I, it is appreciated. If anybody I know is in the market for a sauna, you can be assured I will recommend your company. We are so very pleased with your product & the above & beyond service. Neville & Denise.

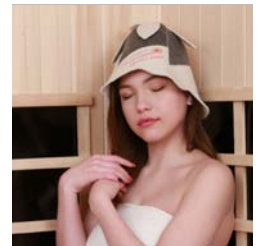
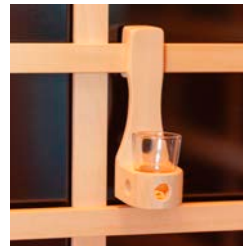
”

Sun Stream Supreme 2 Specifications

2-person Far Infrared Sauna	100% Canadian Hemlock / NO Plywood
Near Zero EF/ELF Electric Fields	Ultra Low EMF 'Nano Carbon Heaters'
Water Base Exterior Lacquer	'Titebond' Made in USA Food Safe Glue
All Adjustable Infrared Intensity	LCD Internal & External Control Panel
Bluetooth Receiver & Audio Cord Connection	L Movable Bench x 1
Supportive Backrests x 2	Kenwood Speakers
High Power LED Chromotherapy	

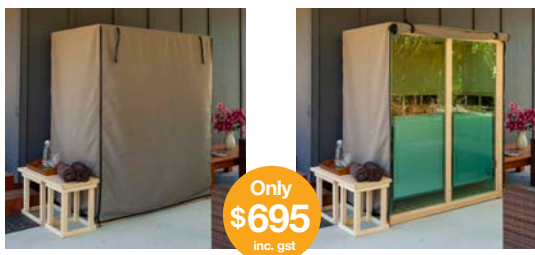
Included Extras:

- Cup holder
- Dry skin lymphatic brush
- Sun Stream towel
- Aromatherapy cup holder
- Sauna hat



Optional Extras:

- Australian made sauna cover \$695*



Measurements:

External: 1245 W x 955 D x 1880 H **Internal:** 1120 W x 840 D x 1755 H

Electrical Specifications:

The Supreme 2 plugs into any standard 220-240 Volt wall outlet.

7.70 Amp, 240 Volt, 1850 Watts

Electrically certified to AS/NZS 60335.1:2011

*Sauna cover shown on the Evolve 30 sauna. Cover size will vary according to sauna model purchased for. Conditions apply for outdoor placement.

Sun Stream Supreme 4 4 person sauna

Relax, Recover, Rejuvenate

Only
\$7,695
inc. gst

The Supreme 4 'Multi-Bench' is a truly unique, four-person home infrared sauna. It features our exclusive movable bench system for the creation of several different bench configurations providing adequate room for four people or comfortable, spacious room for two.

The 'Supreme Four' features our Nano-Carbon ultra-low EMF heaters positioned low on the walls to provide a greater concentration of focused Infrared heat on your body.

This is far superior to the tall narrow heaters used in most brands and ensures a quick heavy sweat!

Sweat now, pay later

Sun Stream Saunas has partnered with Zip so you can get the Sauna you need on a NO INTEREST payment plan today!

Only \$76.84 per week with 24-months interest free financing option.

Get a decision today, it won't impact your credit score. For full details click on the link below.

[CLICK HERE](#)



Sun Stream Supreme 4

Key features



Chromotherapy

Our high power Chromotherapy features 180 LEDs, 40 watts of power and 12 colours to choose from with remote control.



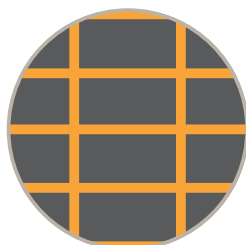
Control Panel

Internal and external LCD control panels featuring adjustable infrared intensity for different purposes and personal needs.



Ultra-Low EMF & ELF

EHS heater technology reduces EMF and ELF to an all-new Industry low.



Superior Heater Placement

Smaller concentrated heaters and large side wall heaters result in a greater immersion in radiant heat.



Canadian Hemlock Timber

Constructed from 100% Hypo-allergenic Canadian Hemlock Timber (FSC Certified).



“

Its been six months and I use the sauna regularly. The construction is solid throughout with the clear grade basswood and electrical hook ups fitting together with precision. The design of this sauna is simple and attractive and has been a great addition to the bath area. Dan.

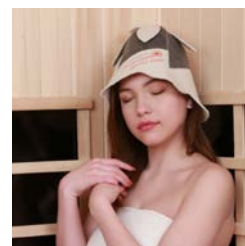
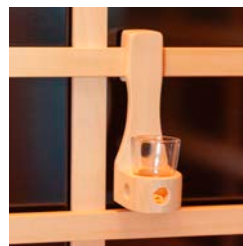
”

Sun Stream Supreme 4 Specifications

4-person 360-degree Far Infrared Sauna	100% Canadian Hemlock / NO Plywood
Industry First 360 Degree Radiant Heat	Ultra Low EMF 'Nano Carbon Heaters'
Near Zero EF/ELF Electric Fields	'Titebond' Made in USA Food Safe Glue
Water Base Exterior Lacquer	LCD Internal/External Control Panel
All Adjustable Infrared Intensity	L Movable Bench x 2
Bluetooth Receiver & Audio Cord Connection	Kenwood Speakers
Supportive Backrests x 4	High Power LED Chromotherapy

Included Extras:

- Cup holder
- Dry skin lymphatic brush
- Sun Stream towel
- Aromatherapy cup holder
- Sauna hat



Optional Extras:

- Australian made sauna cover \$825*



Measurements:

External: 1547 W x 1247 D x 1880 H **Internal:** 1481 W x 1203 D x 1755 H

Electrical Specifications:

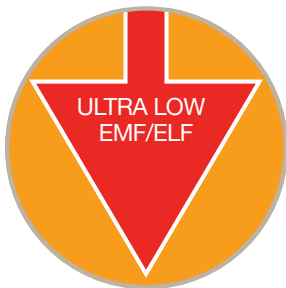
The Supreme 4 plugs into any standard 220-240 Volt wall outlet (10 Amp). NB: may need to be dedicated if other heavy appliances are on the same circuit.

2280 Watts, 240 Volt, 9.5 Amps

Electrically certified to AS/NZS 60335.1:2011

*Sauna cover shown on the Evolve 30 sauna. Cover size will vary according to sauna model purchased for. Conditions apply for outdoor placement.

Industry Leading Features



Ultra Low EMF and Industry's Lowest EMF/ELF:

Sun Stream Infrared Saunas was one of the first sauna companies to cancel the EMF magnetic fields from our carbon panel heaters with levels averaging less than 1.0 mG measured 1" from the heater surface near zero EMFs levels since 2010 !!

Sun Stream's new EHS (ElectroHyperSensitivity) technology reduces EF/ELF electric fields to an all new industry low. Lower than any other brand in the market!

To view testing results: [CLICK HERE](#)



Complete Coverage:

Our Evolve 360 saunas provide a superior immersion in radiant heat, providing true 360-degrees of surround infrared heat. Our Supreme saunas feature large side wall heaters that extend to the very front of the sauna to project radiant heat onto the front of your body. Superior design for a faster heavier sweat!



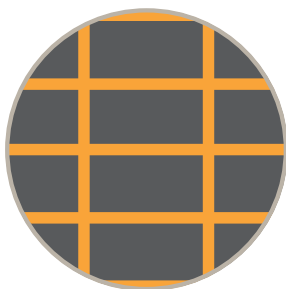
Optimum Heater Positioning:

Our heaters are positioned lower on the walls aiming more radiant heat onto your body verses competitors' larger surface area, cooler carbon panels which produce a less intense radiant heat and wastes infrared heat above your head. Concentration of the electrical power into our smaller hotter panels results in a superior sauna experience inducing a faster heavier sweat.



NO Cloth Covers:

Many competing brands use cloth covers on their heaters, introducing synthetic materials into the sauna and reducing the infrared heat output. Sun Stream Saunas do not use cloth covers over the carbon heater panels.



Maximum Exposure:

Our open design heater guards with a minimum number of wooden slats ensures a maximum intensity of infrared heat is projected from our Nano-Carbon panel heaters.



100% Canadian Hemlock Construction:

All Sun Stream Saunas are built entirely of premium grade FSC Certified Canadian Hemlock Timber. Many brands will use a less expensive soft wood timber for the internal frame. Our saunas are 100% premium grade Canadian Hemlock for the entire sauna, logged milled and kiln dried in BC Canada.

Industry Leading Features Continued



NO Plywood | NO Particle Board:

It is common practice in discount sauna brands to use sheets of plywood in the floor, roof and ceiling of the sauna. The imported plywood used in the discount brands is highly suspect for formaldehyde emissions.

Sun Stream Saunas are plywood and particle board FREE.



'Titebond' Made in USA, FDA Food Contact Glues:

Aside from a small handful of custom made saunas, all infrared saunas on the market are made with wood glues.

Customers often ask, "is the glue used in your sauna non-toxic?" We are proud that all Sun Stream Infrared Saunas are constructed with Made in USA, 'Titebond' water based glues which are FDA approved for contact with food.



Water Based Exterior Lacquer:

Most infrared sauna brands use a high gloss, oil base lacquer on the exterior of their saunas that may off gas harmful VOCs. Sun Stream uses a low sheen, healthy, water based lacquer. Our low sheen lacquer protects the exterior wood of your sauna while retaining a beautiful natural appearance.



A.I.I Adjustable Infrared Intensity:

Sun Stream Infrared Saunas' electronic controller features our new unique all Adjustable Infrared Intensity system. This control mechanism is separate from the air temperature controlled thermostat and allows the amount of infrared heat to be optimally set for different purposes & personal needs.

- 100% full sauna sweating experience
- 75% hot yoga, athletic stretching, injury treatment
- 50% elderly & health challenged individuals



LCD Control Panel:

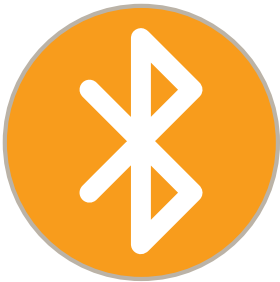
Adjust the settings to your liking from inside the sauna as your session progresses.



High Power Chromotherapy:

Our high power Chromotherapy ceiling panel features 180 LEDs, 40 watts of power and 12 colours to choose from with the remote control.

Industry Leading Features Continued



Bluetooth Connectivity:

Connect your mobile device in an instant to enjoy your favourite music on demand! Concerned about RF radiation? Easily remove the Bluetooth module from the audio circuit board & connect a 3.5mm audio cord to the device of your choice to eliminate any possible RF radiation in the sauna.



Kenwood Speakers:

2 x Premium 2 way Kenwood speakers are installed to truly enhance your sauna experience!



Exclusive 'Option-L' Movable Bench Systems:

Sun Stream Saunas exclusive 'Option-L' movable benches add versatility and comfort to your sauna sessions. Easily lift the self-standing option-L benches in and out of the sauna to suit your needs.



Quick and E-Z Assembly:

Sun Stream Saunas assemble quick and easy with 2-people in 1-2 hours. Our invisible fastener system solidly locks corners together and creates a smooth exterior appearance verses common buckle fasteners on other brands. Our detailed assembly manuals with professional photography make for a stress-free assembly experience.



Removable Floor & Wall Heater Guards:

Easy access means you can clean the sweat off our wipeable heaters to maintain the highest standards of hygiene.



Included extras:

Quality angled backrests for lower back support and comfort, Sun Stream towel, dry skin lymphatic brush, cup holder, aromatherapy and sauna hat.

ADD ON THE ULTIMATE FULL SPECTRUM EXPERIENCE

Compliment your **Sun Stream** infrared sauna with our science based ROJO near infrared and red light therapy panels.

Our **ROJO Light Therapy** panels can be used as a stand alone treatment alongside your Sun Stream Infrared Sauna for the ultimate full spectrum experience.

Light Therapy has been identified as a great way to aid in:

- faster healing
- immune boosting
- anti-aging
- muscle recovery
- and more...



Digitally adjust your
light settings

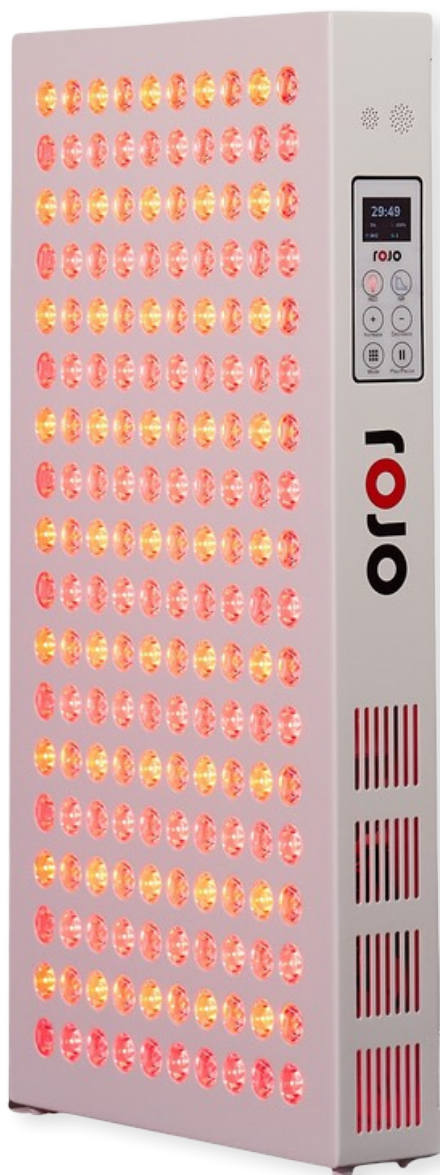


The ROJO 300 delivers incredible value for money compared with other leading brands on the market. It features a fully adjustable stand and is ideal for targeted facial treatments and other localised areas of the body. High quality drivers and components reduce the damaging effects of EMF/ELF and Flicker to near zero levels for your safety.

ROJO 300

\$ 695.00

LED Power	300W
Wavelengths 25% Split	RED 630nm / 660nm NIR 830nm / 850nm
Amps @	0.49A
Dimensions	27cm X 23cm
Power Consumption	103W
LEDs	60 x 5W
Beam Angle	60 Degree
Pulse	1-20 Hertz (NIR only)
Adjustable Intensity	10 - 100%
Cooling fans	1pc
Weight	3.8kg
LED Lifespan	100,000 hrs
Flicker	Flicker Free
EMF/ELF Emission	Negligible
Warranty	3 Years
Best For	Targeted Treatment
Max Area	28" X 24"

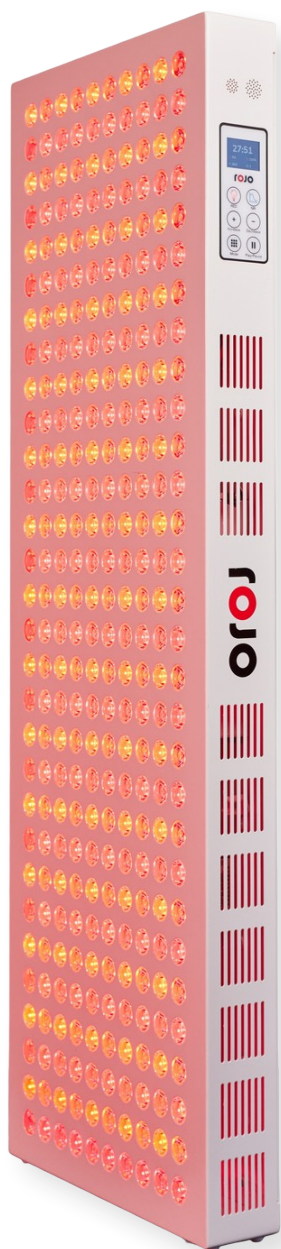


The ROJO 900 is perfect for half body treatments and features 180 x 5W LEDs, plus an advanced digital control system with adjustable intensity and remote control. High quality drivers and components reduce the damaging effects of EMF/ELF and Flicker to near zero levels for your safety.

ROJO 900

\$ 1395.00

LED Power	900W
Wavelengths 25% Split	RED 630nm / 660nm NIR 830nm / 850nm
Amps @	1.80A
Dimensions	60cm X 30cm
Power Consumption	300W
LEDs	180 X 5W
Beam Angle	60 Degree
Pulse	1-20 Hertz (NIR only)
Adjustable Intensity	10 - 100%
Cooling fans	3pc
Weight	1kg
LED Lifespan	100,000 hrs
Flicker	Flicker Free
EMF/ELF Emission	Negligible
Warranty	3 Years
Best For	Targeted Treatment
Max Area	30" X 28"



ROJO 1500

\$ 1895.00

LED Power	1500W
Wavelengths 25% Split	RED 630nm / 660nm NIR 830nm / 850nm
Amps @	2.25A
Dimensions	91cm x 30cm
Power Consumption	500W
LEDs	300 x 5W
Beam Angle	60 Degree
Pulse	1-20 Hertz (NIR only)
Adjustable Intensity	10 - 100%
Cooling fans	4pc
Weight	10.80kg
LED Lifespan	100,000 hrs
Flicker	Flicker Free
EMF/ELF Emission	Negligible
Warranty	3 Years
Best For	Full Body Treatment
Max Area	47" x 24"

The ROJO 1500 is our most popular body panel featuring 300 x 5W LEDs, ideal for full body treatments. You will also experience better coverage with a wider denser spread of 10 LED diodes on each row! Industry leading high-quality drivers and components ensure superior performance and reduce the damaging effects of EMF/ELF and Flicker to near zero levels for your safety.



ROJO 3000

\$ 3495.00

LED Power	3000W
Wavelengths 25% Split	RED 630nm / 660nm NIR 830nm / 850nm
Amps @	4.50A
Dimensions	180cm x 30cm
Power Consumption	992W
LEDs	600 x 5W
Beam Angle	60 Degree
Pulse	1-20 Hertz (NIR only)
Adjustable Intensity	10 - 100%
Cooling fans	8pc
Weight	21.5kg
LED Lifespan	100,000 hrs
Flicker	Flicker Free
EMF/ELF Emission	Negligible
Warranty	3 Years
Best For	Whole Body Treatment
Max Area	87" x 24"

The ROJO 3000 is our largest body panel featuring a whopping 600 x 5W LEDs and a wider denser spread of 10 LED diodes on each row! Ideal for professional businesses or anyone desiring full body coverage. High quality drivers and components also reduce the damaging effects of EMF/ELF and Flicker to near zero levels for your safety.

ROJO MOUNTING SYSTEMS (OPTIONAL)



Mobile Floor Stand

The optional wheeled floor stand can be used for either the ROJO 900 or 1500 models only.

\$85.00



Horizontal to Vertical Stand

Our horizontal to Vertical stand with manual height adjustment can hold 2 x ROJO 1500 panels or 1 x ROJO 3000 panel. Ideal for home or commercial use.

Dimensions:

Base: 71 x 67cm

Adjustable Height: 103cm - 148cm

Ground Clearance: 8.35cm

\$685.00



Motorized Lift Stand

Our Motorized Lift stand with remote control adjustment can hold 4 x ROJO 1500 panels or 2 x ROJO 3000 panels.

This is the ultimate solution for a clinical setting or commercially based business.

Dimensions:

Base: 90cm wide x 70cm deep

Adjustable Height: 80cm - 160cm

Ground Clearance: 8.35cm

\$1095.00

WHY ROJO?

ROJO Light Therapy is a subsidiary company to Sun Stream Infrared Saunas Australia. We now bring the same dedication to our ROJO light therapy panels with a focus on performance, and safety. Features include:

- A concentration of science based multi wavelengths of 630nm & 660nm RED and 830nm and 850nm NIR delivered in tandem for maximum healing benefits.
- A high-quality large digital display and tactile quick settings adjustment buttons with remote control ensure ease of use and reliability over the long term.
- Our case design features smooth surfaces, hidden seams/joins, and high-quality paintwork to give you pride of ownership and a completed user experience you will love.
- High quality components reduce the damaging effects of EMF/ELF and flicker to near zero levels

THE BENEFITS OF NEAR INFRARED & RED LIGHT THERAPY

In the medical literature Red and Near Infrared light therapy is referred to as Photobiomodulation Therapy or PBMT. There is decades of research and 1000s of published studies validating the therapeutic use of Near Infrared and Red light with its 'photochemical' effects. The benefits of PBMT result from our cells' light receptor chromophores being stimulated with single or narrow band frequencies in the 600nm or 800nm range.

Red and Near Infrared light are poorly absorbed (do not generate heat) but are highly transmitted (pass through our tissue). Their effects include reducing oxidative stress and stimulating mitochondrial ATP (energy) production to accelerate our body's healing processes and aid in faster healing, immune boosting, anti aging, mood enhancement, muscle recovery and more.



FREQUENTLY ASKED QUESTIONS

CAN I BUY ROJO RED LIGHT THERAPY PRODUCTS DIRECTLY FROM SUN STREAM SAUNAS?

Yes, ROJO red light therapy devices can be purchased along with your Sun Stream sauna or directly from our ROJO light therapy website. Simply follow this link if you wish to purchase directly from ROJO: www.rojoliththerapy.com.au

CAN I INSTALL THE ROJO LED LIGHTS INSIDE MY SUN STREAM SAUNA?

It's important to remember that Near Infrared & Red Light Therapy employs light, while infrared saunas employ heat. Both technologies deliver therapeutic benefits, but they do so in ways that are completely different to one another—yet also potentially complementary. Therefore we do not recommend installing LED Lights inside your sauna for 2 important reasons:

1. Light Therapy is non-thermal and becomes less effective if our body is covered in a layer of sweat, so for best results use your Light Therapy device prior to sweating in the sauna as a stand alone treatment.
2. Since your cells can only absorb a limited amount of light, treatment times are significantly shorter than your average sauna session, so use your Light Therapy device while the sauna is warming up or at another suitable time.

WOULDN'T IT BE EASIER TO JUST BUY A FULL SPECTRUM SAUNA?

So-called 'Full Spectrum' and Near-Infrared Saunas DO NOT meet the criteria for Photobiomodulation as they provide very little energy at the specific required wavelengths in the 600nm and/or 800nm range.

Prominent sauna companies have added incandescent devices, including simple heat lamp bulbs or halogen tube heaters to their Far Infrared saunas. These emit only small quantities of Near-Infrared and do so over the entire range of Near-Infrared 780nm – 1400nm. These devices are also too hot and therefore, our skin cannot be placed close enough to absorb any of the light.

Lasers and LEDs on the other hand are capable of producing the single frequency wavelengths for therapy and can be comfortably positioned close enough to the body, even pressed right onto our skin, to ensure the delivery of therapeutic levels of light energy.

To learn more about the differences between Far-Infrared, Mid-Infrared and Near-Infrared, read our blog: [Full Spectrum Saunas – why they may not be the best.](#)

Electrical Safety

Your safety is our concern

All Sun Stream saunas are built to the joint electrical safety standard AS/NZS 60335.1:2011 created by Standards Australia and Standards New Zealand. All components used in our saunas are ROHS compliant.

The last thing you want is a poorly tested electrical product in your home that can put your family safety and health at risk. Many cheap saunas exist on the market that are imported and don't meet basic requirements. Safety certificates exist to minimise your risk as a consumer and help vouch that the product has passed important safety tests.

The TÜV Rheinland certification is a voluntary mark that is awarded to show that the product has been tested by a third party for safety and that continuous production control is maintained. Due to its validation process it is important to check for the TÜV safety mark, which unlike the CE mark will prove certain safety standards have been attained.

Pay special attention to this TÜV safety mark when doing your sauna research.



Precisely Right.

